

QUANTIFIABLE EDGES SUBSCRIBER LETTER

ASSESSING MARKET ACTION WITH INDICATORS AND HISTORY

June 21, 2021

Volume 14 Issue 117

Market Overview



Signals Overview

Aggregator	CBI Reading
Long	1

Tonight's Research Points

- Seasonality appears week for the upcoming few days.
- Several price-action studies are all suggesting a bounce is likely within the next couple of days.
- The Fed is still pumping liquidity, but they are soon about to start pumping the brakes. That could mean a challenge for the market down the road.

Short-term Outlook

The Bottom Line

The Aggregator is bullish, and reward/risk appears favorable. I like long-side odds for the next few days.

Summary of Recent Active Studies (see Letters from listed dates for details)

Study Date	Description	Time span	Bias	Avg Run-up	Avg DrawDn	Avg DrawDn - 1 Std Dev
Active - Short Term						
June 21, 2021	Quad Opex closes < 5 days ago	1 day	Bearish			
June 21, 2021	Fed 2 Ago. Down 3+	1-2 days	Bullish			
June 21, 2021	Down 4. Biggest drop today. > 200	1-5 days	Bullish			
June 21, 2021	Fri drop > 1.5x 20-day ATR	1-6 days	Bullish	2.50%	-1.80%	-3.95%
June 18, 2021	3 dn from 50-high < 10ma > 10-low	1-4 days	Bullish			
June 17, 2021	Fed today. SPX down 2.	1-6 days	Bullish			
June 17, 2021	1st close < 10ma in 15+ days	1-3 days	Bullish			
June 15, 2021	SPX up. Up vol < 40%	1-7 days	Bullish			
Active - Long Term						
June 14, 2021	NASDAQ leading	int term	Bullish			
May 3, 2021	Worst 6 Months	1-6 months	Bearish			
April 22, 2021	% of SPX stocks > 100ma exceeds 94%	int term	Bullish			
July 9, 2020	Golden Cross	int term	Bullish			
March 23, 2020	QE4	int term	Bullish			

The Evidence

Friday was a big down day for the market. The SPX finished down 1.3%, the NASDAQ lost 0.9%, and the Russell 2000 tumbled 2.2%. Breadth was negative with the NYSE Up Issues % coming in at 25% and the Up Volume % at 14%. NYSE total volume spiked higher as it often does on opex Friday.

I saw a large amount of evidence this weekend – most of it bullish. But seasonality appears somewhat negative. I’ll cover those studies first. From a seasonal standpoint, the week after opex quad-witching in March, June, and September can often be especially weak. December is also a quad-witching month, but it has more often enjoyed end-of-year strength. The study below is from the 3/22/21 letter. It looked at performance following similar weeks.

Buy SPX on close of Opex Friday in March, June, or September. Sell X days later. \$100k/trade. 1988 - present.												
X Days	All: Net Profit	All: Total Trades	All: Winning Trades	All: Losing Trades	All: % Profitable	All: Max Winning Trade	All: Max Losing Trade	All: Avg Winning Trade	All: Avg Losing Trade	All: Win/Loss Ratio	All: ProfitFactor	All: Avg Trade
5	-57,125.81	100	26	74	26.00	10,171.65	-6,525.56	2,193.66	-1,542.72	1.42	0.50	-571.26
4	-35,892.57	100	31	69	31.00	13,981.45	-7,088.90	1,966.32	-1,403.60	1.40	0.63	-358.93
3	-30,199.45	100	34	66	34.00	7,337.52	-5,455.74	1,440.47	-1,199.63	1.20	0.62	-301.99
2	-21,380.05	100	37	63	37.00	6,123.63	-5,283.52	1,101.05	-986.01	1.12	0.66	-213.80
1	-15,982.35	100	38	62	38.00	7,069.40	-3,791.21	882.61	-798.73	1.11	0.68	-159.82

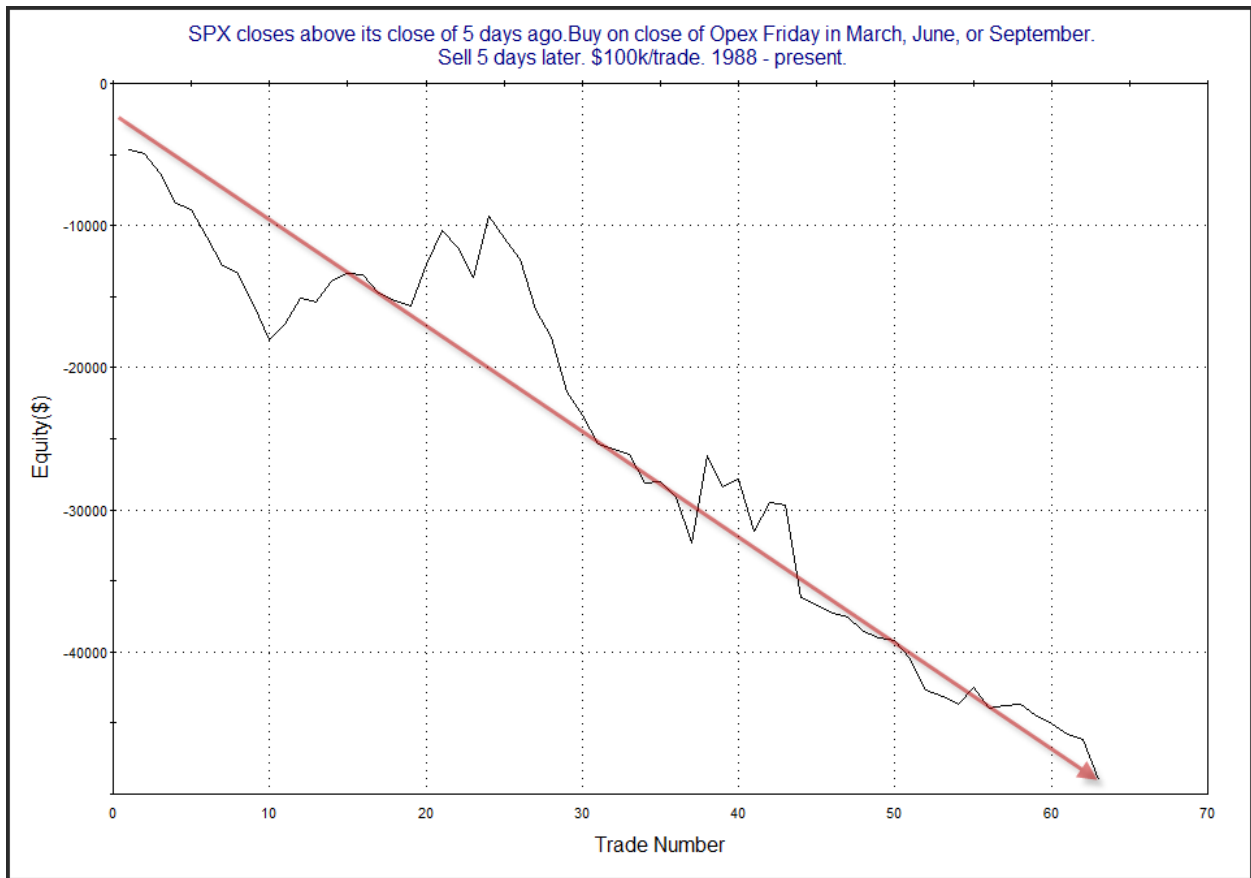
You can see here that results for these weeks show a decided bearish tendency. But it is also worth considering that opex weeks tend to be bullish. And with the selloff happening this past week, I wondered how this might impact the edge. So I broke the above study down by times opex in

March, June, and September closed up vs down. First let's look at times (unlike now) that opex week closed higher.

SPX closes above its close of 5 days ago. Buy on close of Opex Friday in March, June, or September. Sell X days later. \$100k/trade. 1988 - present.

X Days	All: Net Profit	All: Total Trades	All: Winning Trades	All: Losing Trades	All: % Profitable	All: Max Winning Trade	All: Max Losing Trade	All: Avg Winning Trade	All: Avg Losing Trade	All: Win/Loss Ratio	All: ProfitFactor	All: Avg Trade
5	-48,950.18	63	14	49	22.22	6,162.00	-6,525.56	1,774.53	-1,505.99	1.18	0.34	-776.99
4	-36,268.08	63	17	46	26.98	8,361.60	-7,088.90	1,536.24	-1,356.18	1.13	0.42	-575.68
3	-22,391.11	63	20	43	31.75	5,894.20	-5,455.74	1,308.38	-1,129.27	1.16	0.54	-355.41
2	-9,399.61	63	27	36	42.86	4,914.00	-5,283.52	892.22	-930.26	0.96	0.72	-149.20
1	-4,000.07	63	24	39	38.10	7,069.40	-3,791.21	881.45	-645.00	1.37	0.84	-63.49

These numbers are very bearish. Below is the 5-day curve.



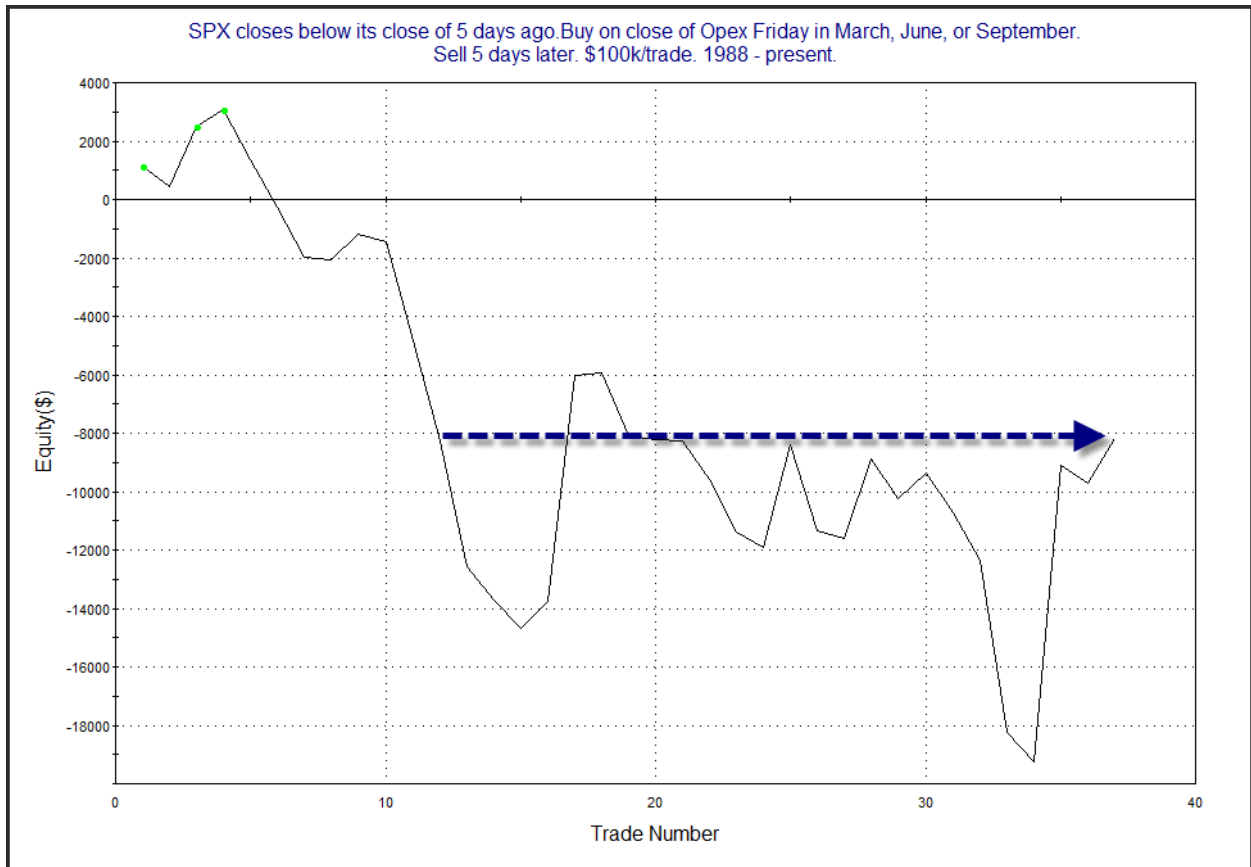
This appears to confirm the downside edge suggested by the numbers.

But this week was a down week. Below are stats for past setups like this.

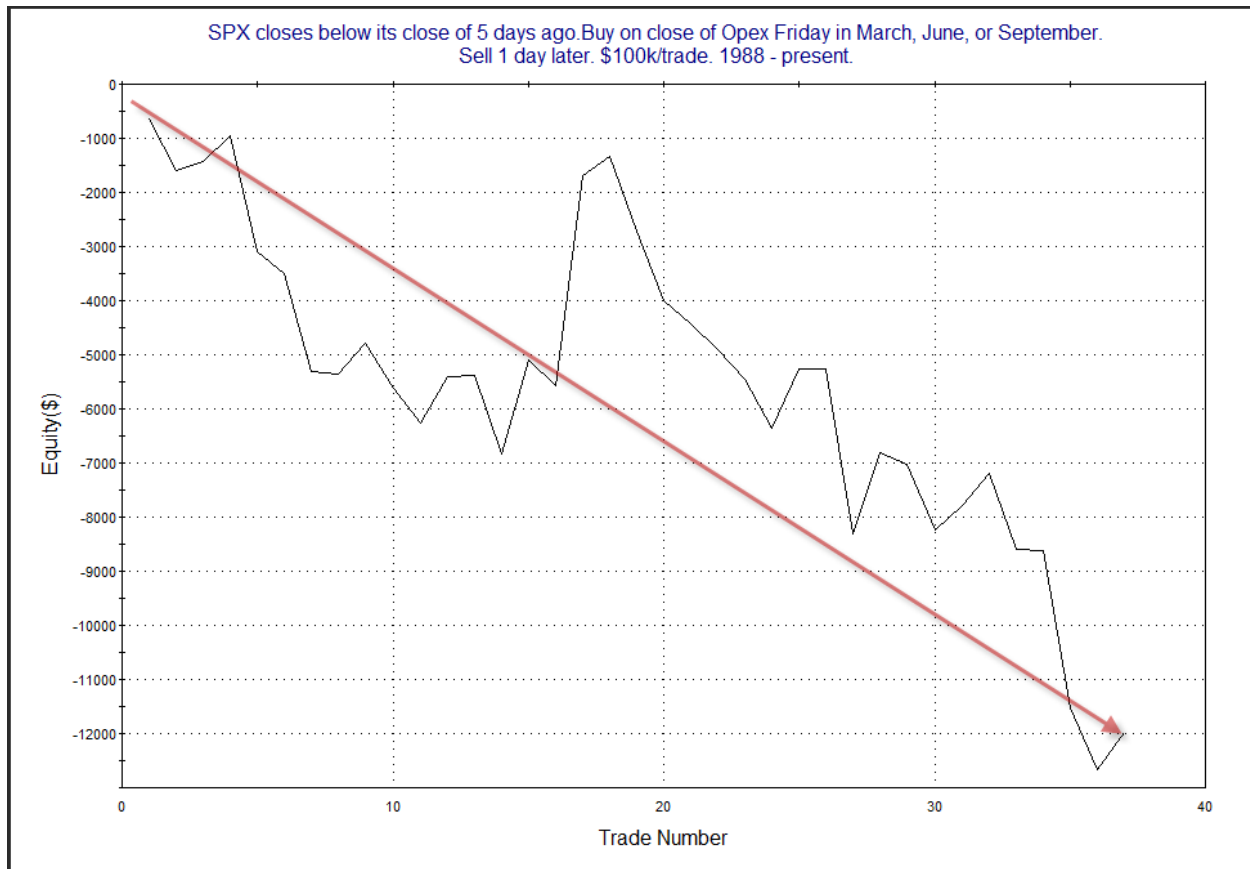
SPX closes below its close of 5 days ago. Buy on close of Opex Friday in March, June, or September.
Sell X days later. \$100k/trade. 1988 - present.

X Days	All: Net Profit	All: Total Trades	All: Winning Trades	All: Losing Trades	All: % Profitable	All: Max Winning Trade	All: Max Losing Trade	All: Avg Winning Trade	All: Avg Losing Trade	All: Win/Loss Ratio	All: ProfitFactor	All: Avg Trade
5	-8,175.61	37	12	25	32.43	10,171.65	-5,895.00	2,682.65	-1,614.69	1.66	0.80	-220.96
4	375.51	37	14	23	37.84	13,981.45	-4,044.10	2,488.55	-1,498.44	1.66	1.01	10.15
3	-7,808.35	37	14	23	37.84	7,337.52	-2,476.50	1,629.18	-1,331.17	1.22	0.74	-211.04
2	-11,980.44	37	10	27	27.03	6,123.63	-3,079.80	1,664.89	-1,060.34	1.57	0.58	-323.80
1	-11,982.29	37	14	23	37.84	3,877.95	-3,044.52	884.59	-1,059.42	0.83	0.51	-323.85

These numbers are not nearly as impressive. Below is a look at the 5-day profit curve.



No consistent edge suggested here. But the 1-day curve does still appear bearish. That can be seen below.



So while the week after quad opex is bearish, it appears substantially less so under current circumstances.

In the 6/24/19 letter I also looked at June on a standalone basis. I have updated those results below.

Buy SPX on opex Friday in June.
Sell X days later. \$100k/trade. 1999 - present.

X Days	All: Net Profit	All: Total Trades	All: Winning Trades	All: Losing Trades	All: % Profitable	All: Max Winning Trade	All: Max Losing Trade	All: Avg Winning Trade	All: Avg Losing Trade	All: Win/Loss Ratio	All: ProfitFactor	All: Avg Trade
5	-21,903.29	22	4	18	18.18	906.92	-3,626.75	511.36	-1,330.49	0.38	0.09	-995.60
4	-10,364.90	22	7	15	31.82	2,020.80	-3,899.98	971.99	-1,144.59	0.85	0.40	-471.13
3	-7,230.44	22	10	12	45.45	1,219.92	-2,266.83	649.57	-1,143.84	0.57	0.47	-328.66
2	-5,485.17	22	8	14	36.36	1,873.56	-2,822.04	825.96	-863.77	0.96	0.55	-249.33
1	-2,759.31	22	10	12	45.45	1,463.36	-3,044.52	564.06	-700.00	0.81	0.67	-125.42

SPX rose on opex week 14 times. All 14 times it finished the next week lower.
When it closed opex week lower (like 2021) it declined 4 times and rose 4 times the following week.

Very bearish numbers here. But the note at the bottom also confirms what we saw above in the broader study. Extremely bearish when opex week has closed higher. Breakeven when it has closed lower.

Also interesting about late June is that we have Russell rebalancing at the end of the month. In the past, this period has also seen the Russell 2000 outperform the S&P 500 by a sizable margin. This is something I looked at last year in the 6/22/20 letter. The table below shows how the Russell 2000 has done versus the SPX from the close the Tuesday after June Opex until the close on the last trading day of June.

% Change from close on Tuesday after June Opex through last day of June. 2001 - 2020			
Year	RUT	SPX	Difference
2001	4.89%	0.97%	3.92%
2002	2.25%	1.40%	0.85%
2003	1.70%	-0.91%	2.61%
2004	3.43%	0.56%	2.87%
2005	-0.22%	-1.84%	1.62%
2006	6.75%	2.45%	4.30%
2007	-1.76%	-1.98%	0.22%
2008	-2.56%	-2.61%	0.05%
2009	3.76%	2.71%	1.06%
2010	-5.64%	-5.90%	0.26%
2011	2.62%	1.94%	0.68%
2012	1.53%	0.31%	1.23%
2013	1.69%	1.15%	0.54%
2014	1.68%	0.53%	1.16%
2015	-3.23%	-2.88%	-0.35%
2016	-0.17%	0.48%	-0.65%
2017	0.88%	-0.56%	1.44%
2018	-2.97%	-1.59%	-1.38%
2019	2.99%	0.84%	2.15%
2020	0.14%	-0.99%	1.13%

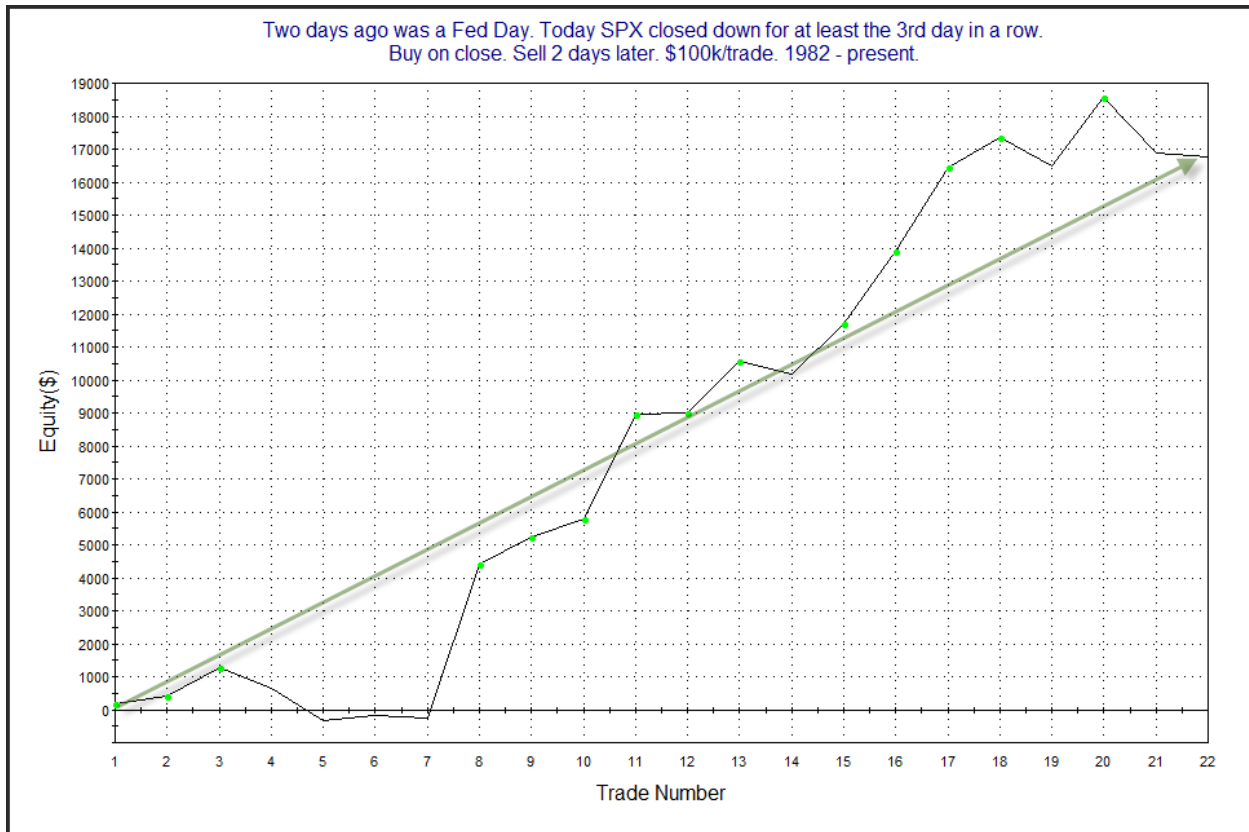
For much of the last 20 years the Russell 2000 has outperformed the SPX during this late June period, though the last few years there have been a few stumbles. The average outperformance over the 20 year period has been 1.18%. This would seem worth keeping in mind as we close out June.

It's interesting that the selling has continued right through and after a (typically bullish) Fed Day. In the 11/13/18 letter I examined other times where the Fed failed to inspire confidence and a selloff of at least 3 days (including the Fed Day) ensued. Results here are updated.

Two days ago was a Fed Day. Today SPX closed down for at least the 3rd day in a row.
Buy on close. Sell X days later. \$100k/trade. 1982 - present.

X Days	All: Net Profit	All: Total Trades	All: Winning Trades	All: Losing Trades	All: % Profitable	All: Max Winning Trade	All: Max Losing Trade	All: Avg Winning Trade	All: Avg Losing Trade	All: Win/Loss Ratio	All: ProfitFactor	All: Avg Trade
5	13,252.87	22	11	11	50.00	5,555.16	-3,477.69	2,642.49	-1,437.68	1.84	1.84	602.40
4	20,348.87	22	14	8	63.64	5,564.00	-2,266.11	2,158.77	-1,234.23	1.75	3.06	924.95
3	19,743.50	22	14	8	63.64	5,801.02	-2,476.50	2,017.28	-1,062.30	1.90	3.32	897.43
2	16,751.99	22	15	7	68.18	4,670.25	-1,709.52	1,434.62	-681.05	2.11	4.51	761.45
1	7,979.35	22	14	8	63.64	2,671.02	-2,968.54	1,110.15	-945.35	1.17	2.06	362.70

The edge looks quite strong over the next few days. Below is a look at a 2-day profit curve.

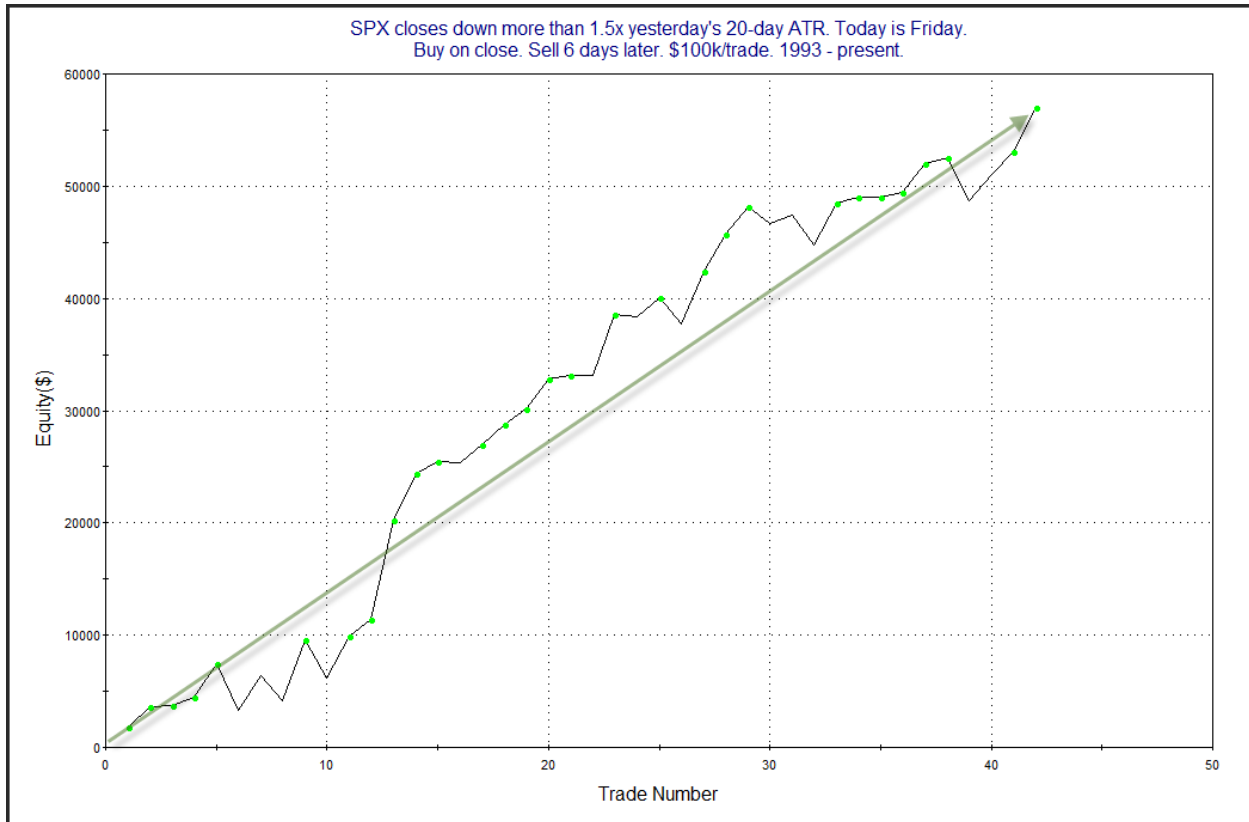


Despite the little dip the last couple of instances, this curve still appears strong. I have included this study on the active list today.

Big drops on Fridays can be interesting. Both the Crash of '29 and the Crash of '87 happened on Monday. The Crash of '87 is still remembered by some traders that are active today (though it is getting less and less each year). In 1987, there was a strong selloff on Friday and then all hell broke loose on Monday. But since then, strong Friday selloffs have commonly been followed by bounces in the following days. Perhaps this is due to the fact that fear of a crash causes what might otherwise be an ordinary selloff to become exaggerated and overdone on Fridays. Or perhaps it is just that people don't want to hold over the weekend. Whatever the reason, the tendency to bounce has been strong. This next study was last discussed in the 2/3/20 subscriber letter. It defines a strong selloff as more than 1.5x the recent (20-day) average true range. Results are updated.

SPX closes down more than 1.5x yesterday's 20-day ATR. Today is Friday. Buy on close. Sell X days later. \$100k/trade. 1993 - present.												
X Days	All: Net Profit	All: Total Trades	All: Winning Trades	All: Losing Trades	All: % Profitable	All: Max Winning Trade	All: Max Losing Trade	All: Avg Winning Trade	All: Avg Losing Trade	All: Win/Loss Ratio	All: ProfitFactor	All: Avg Trade
10	53,904.77	42	28	14	66.67	9,241.60	-6,049.40	3,123.57	-2,396.80	1.30	2.61	1,283.45
9	56,302.91	42	28	14	66.67	7,602.40	-5,483.80	2,984.78	-1,947.92	1.53	3.06	1,340.55
8	59,159.06	42	29	13	69.05	7,949.70	-3,550.72	2,877.20	-1,867.68	1.54	3.44	1,408.55
7	50,482.55	42	28	14	66.67	7,662.81	-4,599.52	2,765.81	-1,925.72	1.44	2.87	1,201.97
6	57,030.05	42	32	10	76.19	8,870.96	-4,202.80	2,418.87	-2,037.39	1.19	3.80	1,357.86
5	41,187.19	43	30	13	69.77	5,393.97	-6,368.04	2,227.42	-1,971.96	1.13	2.61	957.84
4	32,536.64	43	30	13	69.77	5,731.96	-6,520.68	1,894.98	-1,870.22	1.01	2.34	756.67
3	28,481.87	43	27	16	62.79	5,215.85	-3,492.36	1,798.33	-1,254.57	1.43	2.42	662.37
2	16,057.00	43	27	16	62.79	6,245.15	-5,163.50	1,378.74	-1,323.06	1.04	1.76	373.42
1	11,222.33	43	34	9	79.07	3,322.23	-4,074.84	742.98	-1,559.88	0.48	1.80	260.98

The numbers here are all very impressive and suggest a strong bullish bias. Below is a look at the 6-day profit curve.



This edge has asserted itself for a long time.

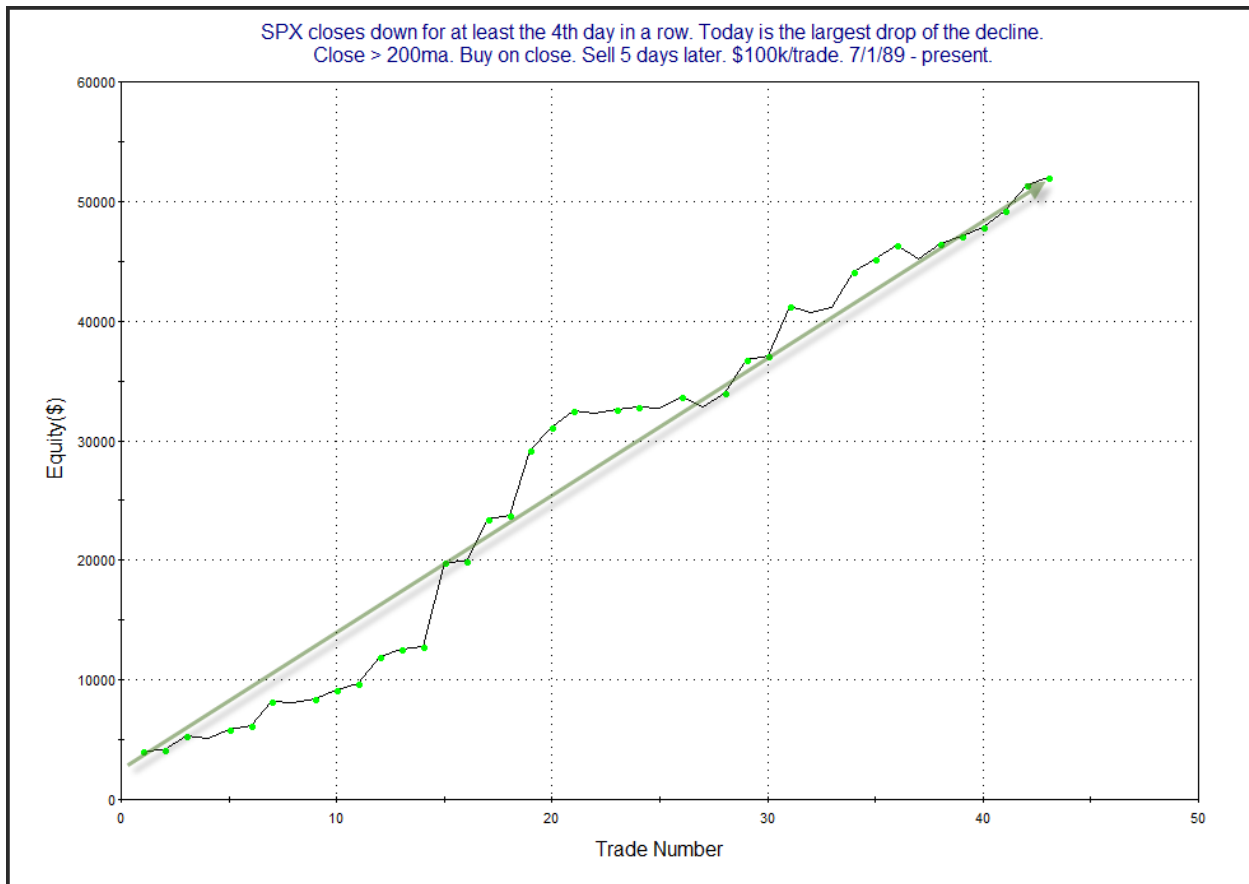
The next study was perhaps the most impressive. It examined other multi-day selloffs that accelerated after already being down for a number of days. It was last seen in the 3/22/17 Subscriber Letter.

SPX closes down for at least the 4th day in a row. Today is the largest drop of the decline.
Close > 200ma. Buy on close. Sell X days later. \$100k/trade. 7/1/89 - present.

X Days	All: Net Profit	All: Total Trades	All: Winning Trades	All: Losing Trades	All: % Profitable	All: Max Winning Trade	All: Max Losing Trade	All: Avg Winning Trade	All: Avg Losing Trade	All: Win/Loss Ratio	All: ProfitFactor	All: Avg Trade
5	52,009.23	43	36	7	83.72	7,070.28	-1,218.72	1,539.09	-485.45	3.17	16.31	1,209.52
4	41,096.99	43	32	11	74.42	5,187.49	-2,665.92	1,612.76	-955.59	1.69	4.91	955.74
3	38,604.99	43	30	13	69.77	5,339.18	-1,565.28	1,616.41	-760.57	2.13	4.90	897.79
2	34,141.76	44	32	12	72.73	4,809.66	-1,343.84	1,332.55	-708.33	1.88	5.02	775.95
1	19,954.28	47	32	15	68.09	5,117.46	-2,005.85	960.58	-718.95	1.34	2.85	424.56

100% of instances closed above the entry price at some point in the next 6 days.

These results appear extremely compelling. The consistency is very strong. Of course the market is always capable of doing things it hasn't before. We've seen plenty evidence of that over the last 13+ years since beginning Quantifiable Edges. So although this condition has led to a bounce in every instance evaluated over the test period, it's no sure thing. In fact, just before the period shown there were 2 trades that were losers. Still, the evidence appears strong enough to suggest a bullish inclination. This is further confirmed by the equity curve below.



The consistently strong upslope makes this an appealing looking equity curve.

One thing the above study does not consider closely is the position of the market. Rather than just saying SPX closed above the 200ma, I decided to filter on times that the decline originated from a 50-day high, and was now at a 10-day low. Those results are below.

SPX closes down for at least the 4th day in a row. Today is the largest drop of the decline.
 The decline started from a 50-day high, and today SPX closed at a 10-day low.
 Buy on close. Sell X days later. \$100k/trade. 7/1/89 - present.

X Days	All: Net Profit	All: Total Trades	All: Winning Trades	All: Losing Trades	All: % Profitable	All: Max Winning Trade	All: Max Losing Trade	All: Avg Winning Trade	All: Avg Losing Trade	All: Win/Loss Ratio	All: ProfitFactor	All: Avg Trade
5	16,297.91	17	13	4	76.47	5,460.84	-909.36	1,390.87	-445.84	3.12	10.14	958.70
4	18,082.18	17	11	6	64.71	5,187.49	-1,776.42	2,214.57	-1,046.34	2.12	3.88	1,063.66
3	20,686.19	17	13	4	76.47	5,339.18	-1,179.00	1,830.29	-776.89	2.36	7.66	1,216.83
2	20,603.40	17	16	1	94.12	3,678.51	-971.28	1,348.42	-971.28	1.39	22.21	1,211.96
1	5,905.73	18	12	6	66.67	2,753.79	-1,699.92	823.04	-661.80	1.24	2.49	328.10

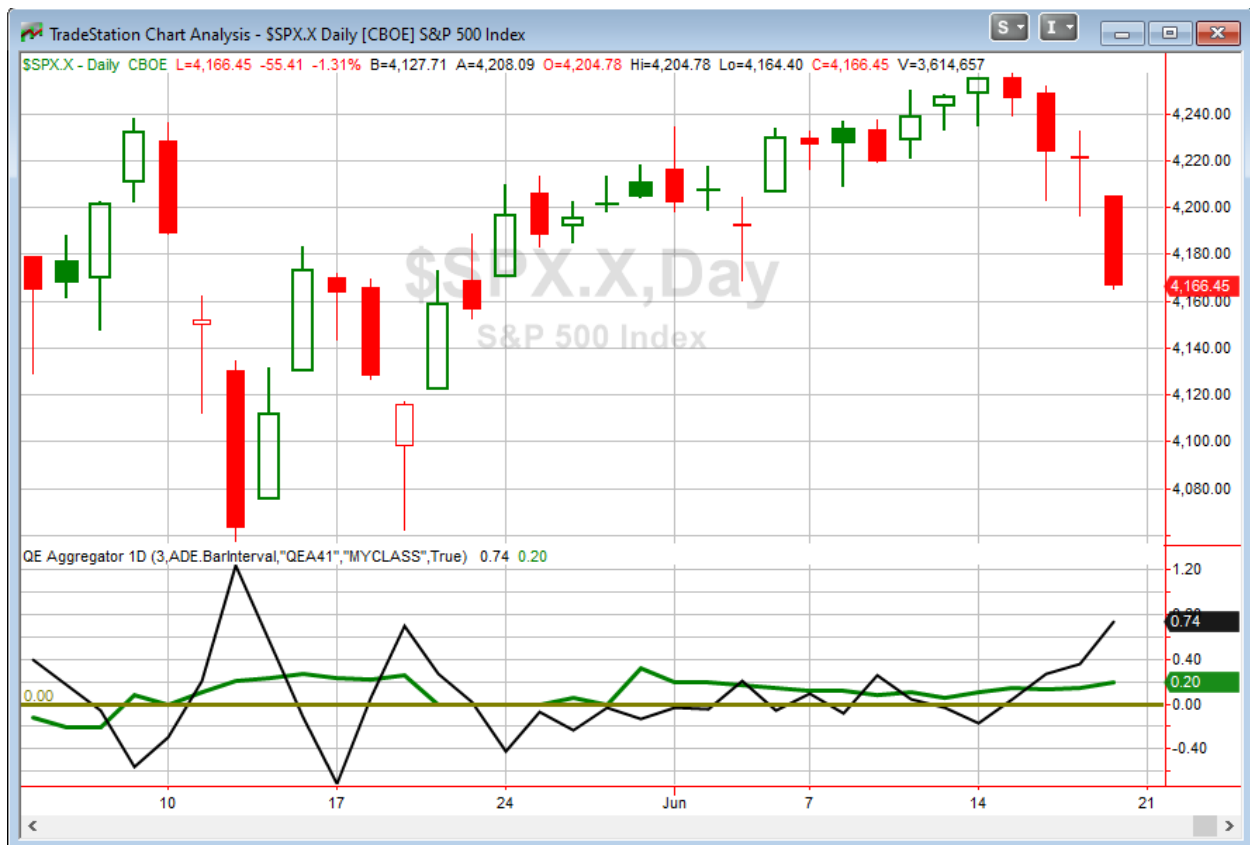
Instances like the current one have been somewhat unusual, but incredibly consistent bounces were seen over the next 2 days. Below is the list of all the instances.

SPX closes down for at least the 4th day in a row. Today is the largest drop of the decline. The decline started from a 50-day high, and today SPX closed at a 10-day low. Buy on close. Sell 2 days later. \$100k/trade. 7/1/89 - present.

Date/Time	Signal	Price	% Profit	Run-up Drawdown
10/13/1989	Buy	\$333.64	2.25%	\$2,759.77
10/17/1989	Sell	\$341.15		(\$1,949.48)
4/23/1990	Buy	\$331.05	0.30%	\$576.82
4/25/1990	Sell	\$332.03		(\$407.70)
9/10/1991	Buy	\$384.56	0.72%	\$722.80
9/12/1991	Sell	\$387.34		(\$252.20)
6/8/1993	Buy	\$444.71	0.15%	\$600.32
6/10/1993	Sell	\$445.37		(\$138.88)
2/20/1996	Buy	\$640.63	2.85%	\$2,982.72
2/22/1996	Sell	\$658.86		\$0.00
12/11/1997	Buy	\$954.94	0.88%	\$1,146.08
12/15/1997	Sell	\$963.39		(\$825.76)
7/23/1998	Buy	\$1,139.74	0.66%	\$904.80
7/27/1998	Sell	\$1,147.26		(\$1,005.72)
4/19/1999	Buy	\$1,289.48	3.62%	\$3,591.28
4/21/1999	Sell	\$1,336.12		(\$92.40)
2/27/2007	Buy	\$1,399.14	0.29%	\$1,189.25
3/1/2007	Sell	\$1,403.17		(\$1,297.17)
5/5/2011	Buy	\$1,335.10	0.84%	\$1,425.24
5/9/2011	Sell	\$1,346.29		\$0.00
4/9/2012	Buy	\$1,382.20	-0.98%	\$58.32
4/11/2012	Sell	\$1,368.71		(\$1,787.04)
12/5/2013	Buy	\$1,785.03	1.31%	\$1,483.44
12/9/2013	Sell	\$1,808.37		\$0.00
1/5/2015	Buy	\$2,020.58	0.26%	\$473.83
1/7/2015	Sell	\$2,025.90		(\$1,378.86)
3/7/2019	Buy	\$2,748.93	1.25%	\$1,262.52
3/11/2019	Sell	\$2,783.30		(\$959.76)
8/5/2019	Buy	\$2,844.74	1.38%	\$1,660.05
8/7/2019	Sell	\$2,883.98		(\$666.05)
2/27/2020	Buy	\$2,978.76	3.74%	\$3,702.60
3/2/2020	Sell	\$3,090.23		(\$4,056.36)
2/22/2021	Buy	\$3,876.50	1.26%	\$1,303.75
2/24/2021	Sell	\$3,925.43		(\$1,772.75)

Results have been strong, but they have also been volatile. Some substantial drawdowns were seen in the 2-day period before they finished strong. Perhaps there is a little more of a dip we could see Monday or early Tuesday, but there are a lot of price-based studies all pointing higher for the next several days.

I have updated [the Aggregator chart](#) below.



With tonight's evidence considered, the green Aggregator Line remained above zero. Positive readings mean net expectations are for upside over the next few days. Meanwhile the black Differential Line is now quite far above 0. The positive Differential Line reading means that SPX is substantially oversold versus recent expectations. So expectations are positive and SPX is oversold. This is considered a bullish configuration. Bullish configurations are visible on the chart whenever both lines close above zero. Therefore, the Aggregator stayed long at the close.

Based on the current active studies, expectations are slated to remain bullish on Monday. This is unlikely to change. Meanwhile, the Differential Pivot will be 4239.52 on Monday. That is 1.75% above Friday's close. Therefore, SPX would need to close up at least 1.75% on Monday in order to turn from oversold to overbought versus recent expectations.

So the Aggregator is bullish. Evidence continues to point higher, and the market is now quite oversold. I have some long exposure, and I still like the long side. I will be looking to add to my long-side exposure over the next few days on continued weakness.

Intermediate-term Outlook (2 weeks – 2 months) – *updated 6/21 – somewhat bullish*

Combo #1	Combo #2	Combo #3
Flat	Long	Long

Above is the status of the different Combination Signals from the Quantifiable Edges Market Timing Course. Signals are long-term in nature. All 3 can be either flat or long. None of them look to short. More information on these signals can be found in the [Quantifiable Edges Market Timing Course](#), which is included with all annual subscriptions. Detailed descriptions of these combination approaches [can be found in Lesson 8](#). Subscribers may also download detailed hypothetical historical performance reports covering 12/31/71 – 3/7/14 in [Lesson 11, Course Downloads](#). (You must go through the course first in order to access the Downloads.) *This week there was no change to the combo systems.*

The major averages all posted losses for the week. The SPX dropped 1.9%, the NASDAQ fell 0.3% and the Russell 2000 tumbled 4.2%. The SPX and NASDAQ remain close to new highs. The Russell has not made any progress since mid-February. With the short-term section being so long this week, I will keep this section brief, especially since there has been little change from an intermediate-term standpoint.

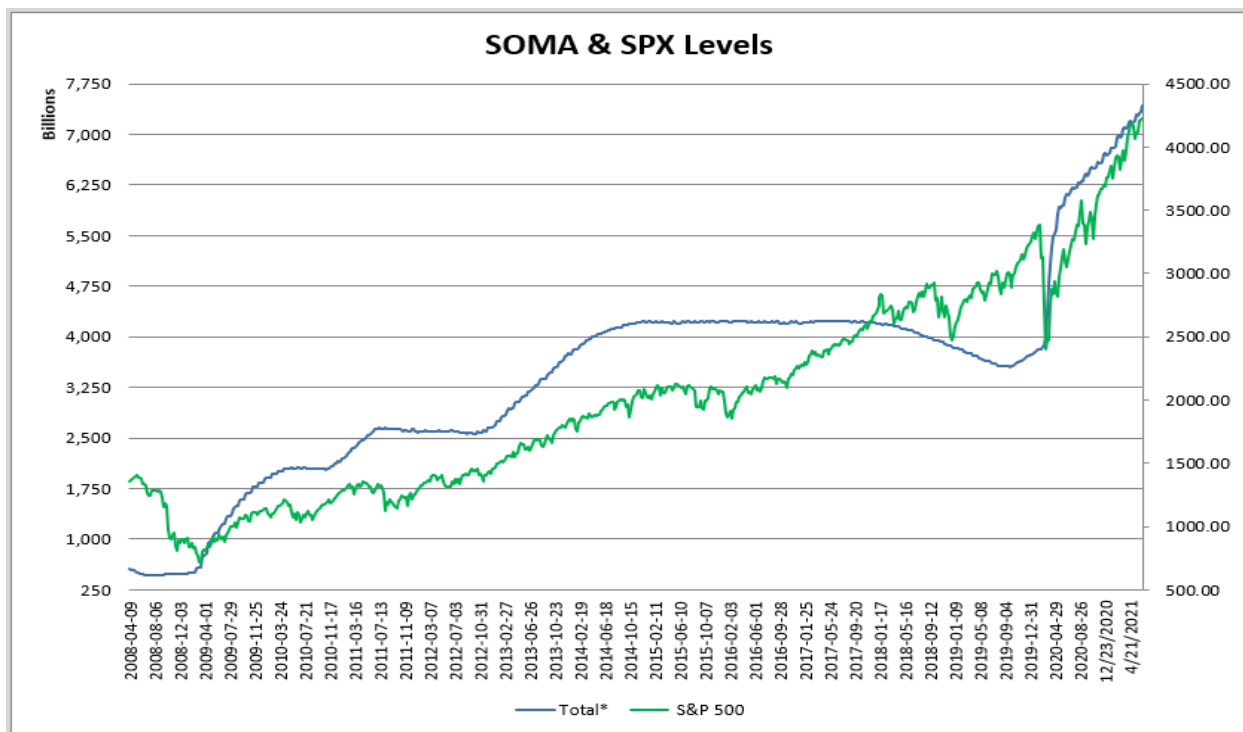
The Fed posted the latest update to the SOMA holdings after the close on Thursday. It can be found below.

Domestic Security Holdings as of

◀ Previous **June 16, 2021** 📅
Posted June 17, 2021 at 4:30 PM

SECURITY TYPE	TOTAL (\$Thousands)
US Treasury Bills (T-Bills)	326,044,000.0
US Treasury Notes and Bonds (Notes/Bonds)	4,403,525,560.1
US Treasury Floating Rate Notes (FRNs)	23,846,691.1
US Treasury Inflation-Protected Securities (TIPS)*	347,258,894.6
Federal Agency Securities**	2,347,000.0
Agency Mortgage-Backed Securities***	2,318,351,802.3
Agency Commercial Mortgage-Backed Securities***	9,772,272.7
Total SOMA Holdings	7,431,146,220.8
Change From Prior Week	106,858,913.0

This past week saw the SOMA rise by about \$107 billion. That is a massive amount, but fairly typical for this time of the month. Below is an updated SOMA/SPX chart from 2008 – present.



The SOMA is in the midst of the largest expansion in history, and the expansion is expected to continue for a while longer. That should continue to benefit the market for a while longer. But the selloff the last few days has been largely attributed to the fact that the Fed is now starting to talk about when they will dial back the stimulus. That will first be in the form of reduced Quantitative Easing amounts. Then we could see a rise in short-term interest rates. The tone this past week suggested the QE taper could begin later this year and we might have a rise in interest rates at some point next year. When the massive liquidity support is removed from the market, that would likely make it much more difficult for market advances. For now, the happy-time music plays on. But when the music stops later this year, we may need to quickly grab a chair.

The bullish case still appears to be stronger than the bearish one. The major indices are mostly near new highs, and the NASDAQ remains in the lead. Both are positives. The Fed's continued pumping is also still a massive plus for the bulls, and while they are thinking about slowing the liquidity, it is currently strong. Bears can point to the weak intermediate-term seasonality. But I am not seeing bearish indications otherwise at this point. Of course that could change quickly. So I am inclined to approach my trading with a somewhat bullish intermediate-term outlook. This means that I will be more cautious with short-side trades than long trades.

Catapult and Capitulative Breadth Statistics

[Catapult & CBI Presentation Link](#)

Open Catapult Triggers

ALL – 1/3 @ \$131.41 (bought @ limit)

Broad Market Large Cap CBI – 1(ALL)

Additional New Trade Ideas

A full listing of system triggers can be found at the [numbered systems page](#) each night. I will cherry pick some of my favorite setups from the S&P 100 and ETF lists along with occasional other trade ideas to track below.

IWM – Buy ¼ index position @ \$222.00 LIMIT ON CLOSE. Based on the short-term outlook above, I will look to take on some IWM exposure if it closes down again on Monday. The Russell is more oversold than SPX short-term and likely to outperform on a bounce with seasonality backing it as well.

HCA – Buy “numbered system” position @ \$201.36 LIMIT. HCA triggered numbered systems 80402, 81119, and 110524 on Friday. In the past, it has shown extremely strong stats for all three setups. I will look to exit this trade on a close above the 10ma.

I'll also note that the [Daily Triggers Spreadsheet](#) has a massive number of setups that have triggered. Traders could check that out for additional ideas.

Current Open Trade Ideas

Symbol	Entry Date	Entry Price	Current Price	% Gain/Loss	Stop	Notes
ALL(1/3)	6/15/2021	\$131.00	\$124.04	-5.31%		Catapult
SPY(1/4)	6/17/2021	\$420.29	\$414.92	-1.28%		div adjusted
SPY(1/4)	6/18/2021	\$414.92	\$414.92	0.00%		Aggregator

The author of Quantifiable Edges (QE), Mr. Robert Hanna, is separately affiliated with a registered investment adviser in the States of Washington, California, Colorado, Michigan, Texas, Massachusetts, and Louisiana, Eastsound Capital Advisors, LLC (ECA) d.b.a. Capital Advisors 360, LLC. ECA may not transact business in states where it is not appropriately registered, excluded or exempted from registration. Individualized responses to persons that involve either the effecting of transaction in securities, or the rendering of personalized investment advice for compensation, will not be made without registration or exemption. Advisory clients of ECA utilizing the approaches developed by Mr. Hanna will receive the QE newsletter at no charge. ECA is not otherwise affiliated with QE, and neither endorses nor warrants the content of this site, the QE newsletter(s), any embedded advertisement, nor any linked resource herein.

This report has been prepared by Quantifiable Edges, LLC and is provided for information purposes only. Under no circumstances is it to be used or considered as an offer to sell, or a solicitation of any offer to buy securities. While information contained herein is believed to be accurate at the time of publication, we make no representation as to the accuracy or completeness of any data, studies, or opinions expressed and it should not be relied upon as such. Robert Hanna, Quantifiable Edges, LLC or clients of Quantifiable Edges, LLC may have positions or other interests in securities (including derivatives) directly or indirectly which are the subject of this report. This report is provided solely for the information of Quantifiable Edges, LLC clients and prospects who are expected to make their own investment decisions without reliance upon this report. Neither Quantifiable Edges, LLC nor any officer or employee of Quantifiable Edges, LLC accepts any liability whatsoever for any direct or consequential loss arising from any use of this report or its contents. This report may not be reproduced, distributed or published by any recipient for any purpose without the prior express consent of Quantifiable Edges, LLC.

Copyright © 2021 Quantifiable Edges, LLC.